



*AUGUSTA SPORTSWEAR BRANDS*





# TIARE JENNINGS

**All-American NCAA Champion**

Tiare represents what ASB softball is all about: passion, commitment and excellence on the Diamond. Enjoy selecting from our best ever 2024 Softball collection.

*Tiare Jennings #23*

**ASB**

**RUSSELL  
ATHLETIC**





# LINE UP

SOFTBALL JERSEY .....	6
SOFTBALL PANTS.....	28
OUTERWEAR .....	33
HEADWEAR .....	42
ACCESSORIES .....	46
BAGS .....	48
DECORATION.....	51

## ICON KEY



**Dry-Excel™**  
Moisture evaporation  
and wicking fabric



**Water Resistant**  
Resists rain & water to keep  
the body protected & dry



**Color Secure®**  
Color Secure® helps  
prevent dye migration



**Moisture Management**  
Fabric wicks moisture away  
keeping the body cool & dry



**4-Way Stretch**  
Stretch properties allow  
for increased mobility



**Odor Resistant**  
Odor Resistant technology  
keeps garments fresher longer



**UPF**  
Garment protects against  
harmful UV rays



NEW



228384

228372



756VTX



R16LSX



RS5DBX

ON F



# OFF FIELD

SOFTBALL | NEW PRODUCTS



6970



223730



R01DWM

# FIELD





**LADIES FREESTYLE SUBLIMATED  
FAUX FULL-BUTTON JERSEY**

**745VTX** Ladies S-3XL

**745VTG** Girls S-XL

- 92% polyester/8% spandex engineered with ventilated stretch mesh for the ultimate combination of lightweight and breathability
- Garment protects against the sun with 20+ UPF
- Dri-Power® Moisture Wicking Technology
- Tag-free label
- Faux full button jersey
- Buttons spaced for easy embellishment
- Set-in sleeves
- Fishtail bottom

Slider



Shortstop



Lite Chevron





For available design lines visit  
[augustasportswear.ca/sublimation](http://augustasportswear.ca/sublimation)

6227



SOFTBALL | FREESTYLE SUBLIMATION



Back



### LADIES FREESTYLE SUBLIMATED FULL-BUTTON JERSEY

**R45VTX** Ladies S-3XL

**R45VTG** Girls S-XL

- 92% polyester/8% spandex mesh
- Garment protects against the sun with 20+ UPF
- Dri-Power® Moisture Wicking Technology
- Tag-free label
- Buttons spaced for easy embellishment
- Set-in sleeves
- Contoured bottom



Strikeout



Shortstop

Lite Chevron



746LGX





SUM736  
756VTX



P500



All Over  
746LGX



Back

Breaking Ball  
756S2X



**NEW**

**LADIES FREESTYLE  
SUBLIMATED TWO-BUTTON  
PERFORMANCE MESH  
JERSEY**

**756VTX** Ladies S-3XL

- 92% polyester/8% spandex engineered with lightweight, breathable stretch fabric for comfort and mobility
- Garment protects against the sun with 15+ UPF
- Dri-Power® Moisture Wicking Technology
- Tag-free label
- Set-in sleeves
- Contoured bottom

**LADIES FREESTYLE  
SUBLIMATED TWO-BUTTON  
JERSEY**

**756S2X** Ladies S-3XL

- 91% polyester/9% spandex engineered with lightweight, breathable stretch fabric for comfort and mobility





For available design lines visit  
[augustasportswear.ca/sublimation](http://augustasportswear.ca/sublimation)



6223



Stars & Stripes



## LADIES FREESTYLE SUBLIMATED TWO-BUTTON JERSEY

**228332** Ladies S-3XL

**228432** Girls S-XL

- Dry-Excel™ 100% polyester wicking smooth knit
- Garment protects against the sun with 50+ UPF
- Tag-free label
- Raglan sleeves
- Contoured bottom



Stinger



Fast Pitch





Back



Fully  
Reversible

Stinger



**LADIES FREESTYLE SUBLIMATED  
LIGHTWEIGHT REVERSIBLE V-NECK  
JERSEY**

**228371** Ladies S-3XL

- 5.2 ounce, lightweight 96% polyester/4% spandex single-ply reversible knit
- Garment protects against the sun with 50+ UPF
- Set-in sleeves

Fully  
Reversible



A-Stripe

Fully  
Reversible



Fast Pitch

746LGX





For available design lines visit  
[augustasportswear.ca/sublimation](http://augustasportswear.ca/sublimation)



598V



A-Stripe



Fully  
Reversible



## LADIES FREESTYLE SUBLIMATED REVERSIBLE V-NECK JERSEY

**228334** Ladies S-3XL

- Dry-Excel™ 100% polyester single ply reversible closed hole mesh
- Garment protects against the sun with 50+ UPF
- Tear away label
- Set-in sleeves



Stinger



Fast Pitch





P500



Cycle  
7D7VTX

Cycle  
746LGX



Clubhouse  
7D7S2X

738LGX



Back



**NEW**

#### LADIES FREESTYLE SUBLIMATED V-NECK PERFORMANCE MESH JERSEY

**7D7VTX** Ladies S-3XL

- 92% polyester/8% spandex engineered with lightweight, breathable stretch fabric for comfort and mobility
- Garment protects against the sun with 15+ UPF
- Dri-Power® Moisture Wicking Technology
- Outside locker label
- Raglan cap sleeves

#### LADIES FREESTYLE SUBLIMATED V-NECK JERSEY

**7D7S2X** Ladies S-3XL

- 91% polyester/9% spandex engineered with lightweight, breathable stretch fabric for comfort and mobility





For available design lines visit  
[augustasportswear.ca/sublimation](http://augustasportswear.ca/sublimation)



Back



NEW

## LADIES FREESTYLE SUBLIMATED TURBO COOLCORE® INTERLOCK V-NECK JERSEY

<b>228384</b>	Ladies	XS-3XL
<b>228484</b>	Girls	S-XL

- Dry-Excel™ 100% polyester Coolcore® interlock smooth knit
- Garment protects against the sun with 30+UPF
- Tag-free label
- Raglan sleeves

Shutout  
 228372



Shutout

Coolcore® is engineered to distribute moisture quickly throughout the garment. As the moisture spreads it dries faster to keep you cool and comfortable, and has UPF 50 sun protection.



Slider  
7D6S2X



7S4DBX



Grand Slam



Breaking Ball



**FREESTYLE SUBLIMATED  
SLEEVELESS JERSEY**

**7D6S2X** Ladies S-3XL

- 91% polyester/9% spandex engineered with lightweight, breathable stretch fabric for comfort and mobility
- Garment protects against the sun with 15+ UPF
- Dri-Power® Moisture Wicking Technology
- Tag-free label
- Scooped neck





For available design lines visit  
[augustasportswear.ca/sublimation](http://augustasportswear.ca/sublimation)



Racerback



NEW

LADIES FREESTYLE SUBLIMATED  
TURBO LIGHTWEIGHT SLEEVELESS  
JERSEY

**228370** Ladies S-3XL  
**228470** Girls S-XL

- Dry-Excel™ 100% polyester wicking knit
- Garment protects against the sun with 45+ UPF
- Tag-free label





#### LADIES FREESTYLE SUBLIMATED PIN-DOT SLEEVELESS JERSEY

**228354** Ladies S-3XL

**228454** Girls S-XL

- Dry-Excel™ polyester Pin-Dot wicking mesh
- 100% polyester pinhole mesh back
- Garment protects against the sun with 50+ UPF
- Racerback styling
- Contoured bottom



#### LADIES FREESTYLE SUBLIMATED SHORT SLEEVE PIN-DOT JERSEY

**228350** Ladies S-3XL

**228450** Girls S-XL

- Dry-Excel™ polyester Pin-Dot wicking mesh front panel
- Garment protects against the sun with 50+ UPF
- Garment protects against the sun with 50+ UPF
- Set-in sleeves
- Contoured bottom



#### LADIES FREESTYLE SUBLIMATED SHORTS

**228355** Ladies S-3XL

**228455** Girls S-XL

- Dry-Excel™ polyester Pin-Dot wicking mesh
- Garment protects against the sun with 50+ UPF
- Covered elastic waistband with inside drawcord



#### LADIES FREESTYLE SUBLIMATED TURBO LIGHTWEIGHT JERSEY

**228335** Ladies S-3XL

**228435** Girls S-XL

- Dry-Excel™ 100% polyester smooth wicking knit body
- 100% polyester pinhole mesh back
- Garment protects against the sun with 50+ UPF
- Tag-free label
- Set-in sleeves
- Contoured bottom



#### LADIES FREESTYLE SUBLIMATED LIGHTWEIGHT SHORTS

**228336** Ladies S-3XL

**228436** Girls S-XL

- Dry-Excel™ 100% polyester smooth wicking knit body
- Garment protects against the sun with 50+ UPF
- Covered elastic waistband with inside drawcord

A-Stripe



A Stripe



Classic  
Color  
Block

Fast Pitch



Classic  
Color  
Block





CUTTER+ COLLECTION



SOFTBALL | FULL-BUTTON

COORDINATING ADULT/YOUTH  
6909 | 6910



Back



#### LADIES CUTTER+ FULL BUTTON JERSEY

<b>6919</b>	Ladies	XS-2XL
<b>6920</b>	Girls	S-L

- 96% polyester/4% spandex lightweight knit with color secure® technology that helps prevent dye migration
- Garment protects against the sun with 50+ UPF
- Micro-Interlock smooth 100% polyester knit side inserts
- Tear away label
- Buttons spaced for easy embellishment
- Set-in sleeves
- Dropped tail



BLACK/  
WHITE  
420

COLUMBIA BLUE/  
WHITE  
293

NAVY/  
WHITE  
301

PURPLE/  
WHITE  
450



ROYAL/  
WHITE  
280

SCARLET/  
WHITE  
408

WHITE  
005





Back

COORDINATING  
ADULT/YOUTH  
6905 | 6906

6228



## LADIES CUTTER+ HENLEY JERSEY

**6917** Ladies XS-2XL

**6918** Girls S-L

- 96% polyester/4% spandex lightweight knit with color secure® technology that helps prevent dye migration
- Garment protects against the sun with 50+ UPF
- Tear away label
- Raglan sleeves



BLACK/  
WHITE  
420

COLUMBIA BLUE/  
WHITE  
293

DARK GREEN/  
WHITE  
438

MAROON/  
WHITE  
380

NAVY/  
WHITE  
301



PURPLE/  
WHITE  
450

ROYAL/  
WHITE  
280

SCARLET/  
WHITE  
408

TEAL/  
WHITE  
331

VEGAS GOLD/  
WHITE  
250



WHITE/  
BLACK  
226

WHITE/  
GRAPHITE  
751

WHITE/  
NAVY  
221

WHITE/  
ROYAL  
220

WHITE/  
SCARLET  
235



WHITE/  
SILVER  
E64



1298





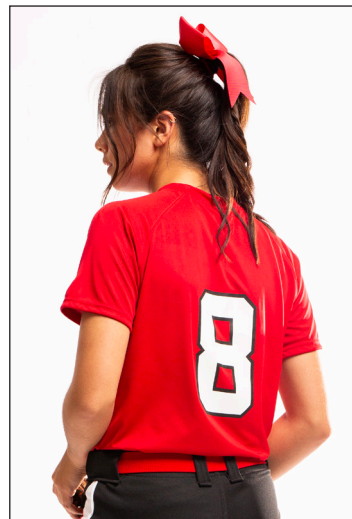
ATTAIN COLLECTION

6701



COORDINATING  
ADULT/YOUTH

1565 | 1566



Back



## LADIES ATTAIN TWO-BUTTON JERSEY

**1567** Ladies XS-3XL

- 100% polyester wicking knit with color secure® technology that helps prevent dye migration
- Tear away label
- Raglan sleeves
- Longer length



BLACK 080 COLUMBIA BLUE 089 DARK GREEN 035 GOLD 025 GRAPHITE 059



KELLY 030 MAROON 745 NAVY 065 ORANGE 029 POWER BLUE 812



PURPLE 747 RED 040 ROYAL 060 SILVER 099 WHITE 005





6227

6701



Back

**LADIES CLASSIC  
V-NECK JERSEY****R01X3X** Ladies S-2XL

- 100% polyester double knit with color secure® technology that helps prevent dye migration
- Dri-Power® Moisture Wicking Technology
- Tag-free label
- Outside locker label
- Raglan sleeves
- Contoured bottom

**COORDINATING  
ADULT/YOUTH****R01X3M | R01X3B**AQUA/  
BLACK/  
WHITE  
09RBURNT  
ORANGE/  
BLACK/  
WHITE  
07RCOLUMBIA  
BLUE/  
NAVY/  
WHITE  
614GOLD/  
BLACK/  
WHITE  
249MAROON/  
STEEL/  
WHITE  
08RNAVY/  
TRUE RED/  
WHITE  
04RNAVY/  
STEEL/  
WHITE  
06RPURPLE/  
BLACK/  
WHITE  
497WHITE/  
TRUE RED/  
WHITE  
03RWHITE/  
NAVY/  
TRUE RED  
10RWHITE/  
BLACK/  
WHITE  
132WHITE/  
ROYAL/  
WHITE  
137



223846



SOFTBALL | V-NECK



Front



## LADIES FULL FORCE JERSEY

**1682** Ladies S-2XL

- 100% polyester propelit micromesh wicking knit
- Tag-free label
- Double layer V-neck collar
- Set-in sleeves



BLACK/  
WHITE  
420

NAVY/  
WHITE  
301

ROYAL/  
WHITE  
280



SCARLET/  
WHITE  
408

WHITE/  
GRAPHITE  
751







Back



COORDINATING  
ADULT/YOUTH  
6907 | 6908



## LADIES CUTTER+ V-NECK JERSEY

**6915** Ladies XS-2XL

**6916** Girls S-L

- 96% polyester/4% spandex lightweight knit with color secure® technology that helps prevent dye migration
- Garment protects against the sun with 50+ UPF
- Tear away label
- Raglan sleeves



BLACK/  
WHITE  
420

COLUMBIA BLUE/  
WHITE  
293

DARK GREEN/  
WHITE  
438

GOLD/  
WHITE  
245

GRAPHITE/  
WHITE  
R04



LIME/  
ROYAL  
03W

MAROON/  
WHITE  
380

NAVY/  
WHITE  
301

ORANGE/  
WHITE  
320

PURPLE/  
WHITE  
450



ROYAL/  
WHITE  
280

SCARLET/  
WHITE  
408

TEAL/  
WHITE  
331

VEGAS GOLD/  
WHITE  
250

WHITE  
005



WHITE/  
BLACK  
226

WHITE/  
ROYAL  
220

WHITE/  
SCARLET  
235







6701



Available in Girls

## COORDINATING ADULT/YOUTH

1517 | 1518



## LADIES CUTTER JERSEY

**1522** Ladies S-2XL  
**1523** Girls S-L

- 100% polyester wicking knit with color secure® technology that helps prevent dye migration
- 92% polyester/8% spandex wicking pinhole mesh underarms
- Tag-free label
- Raglan sleeves
- Contoured bottom







Back



# LADIES CUTTER+ SLEEVELESS JERSEY

**6913** Ladies XS-2XL

**6914** Girls S-L

- 96% polyester/4% spandex lightweight knit with color secure® technology that helps prevent dye migration
- Garment protects against the sun with 50+ UPF
- Tear away label
- Contoured bottom



BLACK/  
WHITE  
420

COLUMBIA BLUE/  
WHITE  
293

DARK GREEN/  
WHITE  
438



GRAPHITE/  
WHITE  
R04

NAVY/  
WHITE  
301

PURPLE/  
WHITE  
450



ROYAL/  
WHITE  
280

SCARLET/  
WHITE  
408

TEAL/  
WHITE  
331

WHITE  
005

CUTTER+ COLLECTION



6226



1298





Back



### LADIES DYNAMITE JERSEY

**312162** Ladies S-2XL

**312163** Girls S-L

- 92% polyester/8% spandex wicking pinhole mesh
- Tag-free label



ATHLETIC  
GOLD/  
BLACK/  
WHITE  
657

BLACK/  
BLACK/  
WHITE  
529

COL. BLUE/  
BLACK/  
WHITE  
519

FOREST/  
BLACK/  
WHITE  
148

MAROON/  
BLACK/  
WHITE  
524

NAVY/  
SILVER GREY/  
WHITE  
515

ORANGE/  
BLACK/  
WHITE  
322

PURPLE/  
BLACK/  
WHITE  
497

RASPBERRY/  
BLACK/  
WHITE  
593

ROYAL/  
BLACK/  
WHITE  
526

SCARLET/  
BLACK/  
WHITE  
952

TEAL/  
BLACK/  
WHITE  
332

WHITE/  
BLACK/  
WHITE  
132



6701



## LADIES ROVER JERSEY

**1687** Ladies S-2XL  
**1688** Girls S-L

- 100% polyester wicking smooth knit with color secure® technology on front and back panels that helps prevent dye migration
- 90% polyester/10% spandex wicking mesh back yoke and side inserts with color secure® technology
- Tag-free label



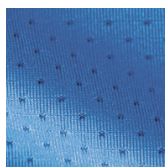
BLACK/WHITE 420  
 COLUMBIA BLUE/WHITE 293  
 DARK GREEN/WHITE 438  
 GRAPHITE/WHITE R04  
 NAVY/WHITE 301  
 POWER PINK/WHITE 468



PURPLE/WHITE 450  
 ROYAL/WHITE 280  
 SCARLET/WHITE 408  
 SILVER/WHITE 254  
 TEAL/WHITE 331  
 WHITE 005



Back



Pinhole mesh



## LADIES TORNADO JERSEY

**1355** Ladies S-2XL  
**1356** Girls S-L

- 92% polyester/8% spandex wicking pinhole mesh
- Tag-free label



BLACK/GOLD/WHITE 418  
 COL. BLUE/NAVY/WHITE 614  
 LIME/BLACK/WHITE 680  
 NAVY/GOLD/WHITE 516  
 ORANGE/BLACK/WHITE 322  
 POWER PINK/BLACK/WHITE 456



PURPLE/WHITE 615  
 POWER YELLOW/BLACK/WHITE 458  
 RED/BLACK/WHITE 110  
 ROYAL/RED/WHITE 115  
 WHITE/BLACK/WHITE 132





### LADIES SLEEVELESS ATTAIN JERSEY

**4794** Ladies S-2XL  
**4795** Girls XS-L

- 100% polyester wicking knit with color secure® technology that helps prevent dye migration
- Tear away label



NAVY 065 BLACK 080 COLUMBIA BLUE 089 SILVER 099 PURPLE 747 ELECTRIC PINK 80N



RED 040 ROYAL 060 WHITE 005 GOLD 025 ORANGE 029 DARK GREEN 035



Pinhole mesh



### COORDINATING ADULT/YOUTH

**1420 | 1421**

### LADIES INFERNO SHORTS



**1292** Ladies S-2XL  
**1293** Girls S-L

- 92% polyester/8% spandex wicking pinhole mesh
- Tag-free label
- Covered elastic waistband with inside drawcord
- 5-inch inseam
- Girls inseam graded



BLACK 080 RED 040 ROYAL 060 COLUMBIA BLUE 089



NAVY 065 GRAPHITE 059 POWER PINK 809

### LADIES OCTANE SHORTS



**1423** Ladies S-2XL

- 100% polyester wicking knit
- Tag-free label
- Covered elastic waistband with inside drawcord
- 7-inch inseam



BLACK 080 DARK GREEN 035 GRAPHITE 059 MAROON 045\* NAVY 065 RED 040 ROYAL 060 SILVER 099

\*Maroon shades can vary by brand, please contact our Customer Care with questions.



**LADIES FREESTYLE  
SUBLIMATED KNICKER**

**746LGX** Ladies S-3XL

**746LGG** Girls S-XL

- 12 ounce per linear yard, 100% polyester stretch double knit
- Branded silicone knitted elastic waistband with tunnel belt loops
- Two-snap closure
- Zipper fly
- Two set-in double welt back pockets with button closure
- Reinforced knees
- Elastic cuffs



Lite Chevron



Fast Pitch







For available design lines visit  
[augustasportswear.ca/sublimation](http://augustasportswear.ca/sublimation)



P500

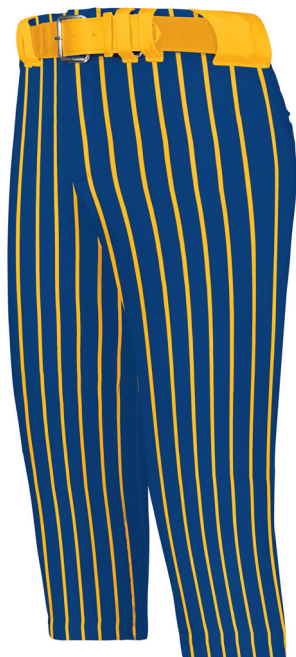
Windmill  
228350



## LADIES FREESTYLE SUBLIMATED KNICKER

**228372** Ladies XS-3XL  
**228472** Girls S-XL

- 16 ounce per linear yard, 100% polyester double knit with stain release
- Silicone knitted elastic waistband with tunnel belt loops
- Two-snap closure
- Zipper fly
- Two set-in double welt back pockets with button closure
- Reinforced knees
- Elastic cuffs



Pin Stripe



Windmill





Yoga pant fit

FLEXSTRETCH



4-Way stretch properties allow for increased mobility



NEW

## LADIES FLEXSTRETCH SOFTBALL PANT WITH BELT LOOPS

**R16LSX** Ladies XS-2XL

- 13 ounce per linear yard, 87% polyester/13% spandex wicking knit with stain release
- Yoga pant fit
- Branded silicone knitted elastic waistband with tunnel belt loops
- Two-snap closure
- Zipper fly
- Two set-in double welt back pockets with button closure
- Reinforced knees
- Elastic cuffs



BASEBALL  
GREY  
BG7



BLACK  
BLK



WHITE  
WHI





### LADIES SLIDEFLEX PANT

<b>1297</b>	Ladies	XS-3XL
<b>1298</b>	Girls	XS-L

- 16 ounce per linear yard, 100% polyester double knit
- Wicking stain release properties
- Mid rise, elastic waistband
- Tunnel belt loops
- Two-snap closure
- Zipper fly
- Two set-in double welt back pockets
- Reinforced knees
- Graded inseam
- Elastic cuffs



BLUE GREY 053    BLACK 080    GRAPHITE 059    NAVY 065    WHITE 005



### LADIES ON DECK SOFTBALL KNICKER

<b>RS5DBX</b>	Ladies	XS-2XL
<b>RS4DBG</b>	Girls	S-L

- 11 ounce per linear yard, 100% polyester stretch double knit with stain release
- Branded silicone knitted elastic waistband with tunnel belt loops
- Two-snap closure
- Zipper fly
- Two set-in double welt back pockets with button closure
- Reinforced knees
- Elastic cuffs



BASEBALL GREY BG7    BLACK BLK    NAVY NAV    WHITE WHI



### LADIES GAMER CLASSIC PANT

<b>6970</b>	Ladies	XS-2XL
<b>6971</b>	Girls	S-L

- 12.5 ounce per linear yard, 100% polyester double-knit
- Elastic waistband
- Tunnel belt loops
- Two-snap closure
- Zipper fly
- Right back welt pocket
- Reinforced knees
- Elastic cuffs



BLUE GREY 053    BLACK 080    NAVY 065    WHITE 005





## GAMER PULL-UP BASEBALL PANTS

**NEW**

**6848** Adult S-XL  
**6849** Youth XXS-XL

- 12.7 ounce per linear yard, 100% polyester double-knit
- Elastic waistband with inside drawcord
- Faux fly
- Right back welt pocket
- Reinforced double knees
- Retail ticketing matchbook
- Graded inseam
- Elastic cuffs



## GAMER PULL-UP BASEBALL PANTS WITH LOOPS

**NEW**

**6850** Adult S-XL  
**6851** Youth XXS-XL

- 12.7 ounce per linear yard, 100% polyester double-knit
- Elastic waistband with inside drawcord
- Tunnel belt loops
- Faux fly
- Right back welt pocket
- Reinforced double knees
- Retail ticketing matchbook
- Graded inseam
- Elastic cuffs



BLACK  
080

BLUE  
GREY  
053

WHITE  
005



BLACK  
080

BLUE  
GREY  
053

WHITE  
005





## HERITAGE JACKET

**229140** Adult S-4XL  
5XL in select colors

- Duraweave™ fabric has a smooth oxford nylon surface
- 100% polyester quilted lining
- 15mm matte painted enamel snap front
- Set-in sleeves
- Front pockets
- Inside valuables pocket
- Rib-trim collar, cuffs, and bottom hem

Snap  
Front



Available in 4XL-5XL



BLACK/  
WHITE  
420

NAVY/  
WHITE  
301

ROYAL/  
WHITE  
280

SCARLET/  
WHITE  
408

BLACK  
080

NAVY  
065



BLACK/  
LT GOLD/  
WHITE  
R21

BLACK/  
SCARLET/  
WHITE  
R20

DARK  
GREEN/  
LT GOLD/  
WHITE  
S06

MAROON/  
WHITE  
380

BLACK/  
ORANGE/  
WHITE  
611

NAVY/  
LT GOLD/  
WHITE  
S30



## SATIN BASEBALL JACKET/STRIPED TRIM

**3610** Adult XS-3XL

- Outer shell of 100% nylon satin
- Lined with 100% polyester brushed tricot
- Raglan sleeves
- Front pockets
- Rib-knit collar, cuffs and bottom



COLUMBIA  
BLUE/  
WHITE  
293

LIGHT  
PINK/  
WHITE  
465

METALLIC  
GOLD/  
WHITE  
259

METALLIC  
SILVER/  
WHITE  
260



BLACK/  
WHITE  
420

RED/  
WHITE  
400

ROYAL/  
WHITE  
280

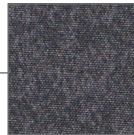
NAVY/  
WHITE  
301







## RAIDER COLLECTION



Tech Print  
Pattern

Sleeve pocket  
with silver media  
port & silicone  
welded zipper

Divided Front  
Pouch Pocket

Spandex-  
Bound  
Cuffs



### RAIDER PULLOVER

**229155** Adult XS-3XL  
4XL in select colors

- Ultra-lightweight Aero-Tec™ fabric provides both weather protection and zero noise, without the bulk
- Set-in sleeves



CARBON  
PRINT/  
FOREST  
H69

CARBON  
PRINT/  
MAROON  
H06

CARBON  
PRINT/  
ORANGE  
H07

CARBON  
PRINT/  
PURPLE  
H68

CARBON  
PRINT/  
WHITE  
H04

Available in Adult 4XL



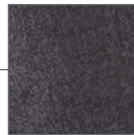
CARBON  
PRINT/  
BLACK  
H05

CARBON  
PRINT/  
GRAPHITE  
H60

CARBON  
PRINT/  
NAVY  
H03

CARBON  
PRINT/  
ROYAL  
H02

CARBON  
PRINT/  
SCARLET  
H01



Tech Print  
Pattern

Sleeve pocket  
with silver media  
port & silicone  
welded zipper

Divided Front  
Pouch Pocket



### RAIDER PULLOVER SHORT SLEEVE

**229545** Adult S-3XL  
4XL in select colors

- Ultra-lightweight Aero-Tec™ fabric provides both weather protection and zero noise, without the bulk
- Set-in sleeves

Available in Adult 4XL



CARBON  
PRINT/  
BLACK  
H05

CARBON  
PRINT/  
NAVY  
H03

CARBON  
PRINT/  
ROYAL  
H02

CARBON  
PRINT/  
SCARLET  
H01

CARBON  
PRINT/  
WHITE  
H04



CARBON  
PRINT/  
FOREST  
H69

CARBON  
PRINT/  
GRAPHITE  
H60

CARBON  
PRINT/  
MAROON  
H06

CARBON  
PRINT/  
ORANGE  
H07

CARBON  
PRINT/  
PURPLE  
H68





## SHORT SLEEVE PULLOVER

**872RVM** Adult S-3XL

**872RVB** Youth S-XL

- 100% polyester lightweight breathability fabric
- Dri-Power® Moisture Wicking Technology
- Raglan sleeves
- Adjustable bottom hem with hidden shockcord closure (on Adult only)

Colors Available in Youth



BLACK/  
WHITE  
BWH

NAVY/  
WHITE  
NWH

ROYAL/  
WHITE  
ROW

TRUE RED/  
WHITE  
TRW

WHITE/  
STEALTH  
XDE



Embossed  
pattern



## BIONIC WINDSHIRT

**229019** Adult S-3XL

- Micron™ polyester is a lightweight, wind/water resistant fabric
- Sleeves and arms are embossed with the Screenmesh print
- Jersey and taffeta lining for added warmth
- Raglan sleeves
- Front pockets
- Elastic cuffs
- Open bottom with adjustable elastic hidden drawcord



BLACK/  
LT GOLD  
R16

BLACK/  
ORANGE  
423

BLACK/  
SCARLET  
500

BLACK/  
VEGAS  
GOLD  
255

BLACK/  
WHITE  
420

CARBON/  
BLACK  
E84

CARDINAL/  
WHITE  
409

DK GREEN/  
WHITE  
438

KELLY/  
WHITE  
340



MAROON/  
WHITE  
380

NAVY/  
LT GOLD  
S28

NAVY/  
SCARLET  
S20

NAVY/  
VEGAS  
GOLD  
256

NAVY/  
WHITE  
301

PURPLE/  
WHITE  
450

ROYAL/  
LT GOLD  
S67

ROYAL/  
WHITE  
280

SCARLET/  
WHITE  
408





Jacket folds up into  
zippered front pocket



#### RANGE PACKABLE PULLOVER

**229554** Adult S-3XL  
4XL in select colors

**229654** Youth S-XL  
Select Colors

- Tech weave printed Micron™ lightweight polyester, wind/water resistant fabric
- Adjustable 3 piece hood with eyelets and concealed cord locks on Adult only (elastic on youth)
- Raglan sleeves
- Half-elastic cuffs
- Adjustable bottom hem with hidden shockcord closure on right side of pocket (on Adult only)



#### MICRO POLY WINDSHIRT/LINED

**3415** Adult S-4XL

- Outer shell of 100% micro polyester
- Lined with 100% polyester taffeta
- Rib-knit V-neck collar, cuffs and bottom band
- Set-in sleeves
- Side seam pockets





Ladies Fit

Side seam zipper  
for easy on/off

Embossed Pattern



### SERIESX PULLOVER

**229533** Adult XS-3XL  
4XL in select colors

**229633** Youth S-XL

**229733** Ladies XS-2XL

- Micron™ polyester is a lightweight, wind/water-resistant fabric
- Micromesh lined nylon body
- Taffeta lined sleeves
- Set-in sleeves
- Front pockets
- Spandex bound cuffs
- Dropped tail with side vents
- Alternate pant: 229531 | 229631 | 229731, 229095

Available in 4XL, Ladies & Youth



BLACK  
080

CARBON  
J96

WHITE  
005

Available in Adult & Ladies



NAVY  
065

ROYAL  
060

SCARLET  
083



BLACK/  
ORANGE  
423

BLACK/  
SCARLET  
500



CARDINAL  
J36

CARBON/  
GOLD  
43M

COLUMBIA  
BLUE  
089

DARK  
GREEN  
035

KELLY  
030

MAROON  
045

NAVY/  
GOLD  
302

NAVY/  
SCARLET  
S20

PURPLE  
050





Back



Side zipper



### CLUBHOUSE PULLOVER

**229595** Adult S-3XL  
**229695** Youth S-XL

- Areo-Tec 100% polyester
- Low profile collar
- Set-in sleeves
- Side seam pockets
- Spandex bound cuffs
- Side zipper for easy on/off



BLACK/  
BLACK  
425

BLACK/  
ORANGE  
423

BLACK/  
WHITE  
420

DARK GREEN/  
WHITE  
438

GRAPHITE/  
WHITE  
R04

NAVY/  
NAVY  
S14

NAVY/  
SCARLET  
S20

NAVY/  
WHITE  
301

ROYAL/  
WHITE  
280

SCARLET/  
WHITE  
408

WHITE/  
GRAPHITE  
751



Side seam zipper for easy on/off



Stretch mesh at center back for maximum mobility

**CLUBHOUSE SHORT SLEEVE PULLOVER****229581** Adult S-4XL

5XL in select colors

**229681** Youth S-XL

- Aero-Tec 100% polyester
- Low profile collar
- Set-in sleeves
- Side seam pockets

Available in 5XL

BLACK/  
WHITE  
420GRAPHITE/  
WHITE  
R04NAVY/  
WHITE  
301WHITE/  
GRAPHITE  
751ROYAL/  
WHITE  
280SCARLET/  
WHITE  
408DARK  
GREEN/  
WHITE  
438MAROON/  
WHITE  
380BLACK/  
ORANGE  
423NAVY/  
SCARLET  
S20





**NEW**

## CROSSTOWN JACKET

<b>223530</b>	Adult	S-3XL
<b>223630</b>	Youth	S-XL
<b>223730</b>	Ladies	S-2XL

- Dry-Excel™ 100% polyester double-knit
- Dry-Excel™ 100% polyester mesh inserts
- Ladies' fit on style 223730
- Woven label
- Front zipper
- Set-in sleeves
- Front zippered pockets
- Open bottom



## PACKABLE FULL ZIP JACKET

<b>229582</b>	Adult	S-4XL
<b>229782</b>	Ladies	XS-3XL

- Micron™ polyester is a lightweight, wind/water-resistant fabric
- Ladies' fit on style 229782
- Adjustable hood with inside concealed cord locks
- Reflective trim
- Back vent with adjustable closure for full decoration access
- Set-in sleeves
- Front zippered pockets
- Spandex bound cuffs
- Open bottom
- Adjustable elastic hidden drawcord at bottom hem (Adult only)



Zippered pocket on wearer's left sleeve



Hidden drawcord at waist on Ladies



Available in Adult only



Jacket folds into zippered pocket





## POTOMAC JACKET



229527 Adult S-3XL

- Micro-Cord™ woven polyester fabric with a raised, ribbed texture
- Micromesh lined body and sleeves
- Concealed adjustable hood with eyelets and concealed cord locks stows when not in use
- Back vent with adjustable closure for full decoration access
- Front zippered pockets
- Dual inside pockets
- Rib-knit collar and cuffs
- Open bottom with adjustable elastic hidden drawcord (on Adult)
- Dropped tail



Back



## 60/40 FLEECE HOODIE

5414 Adult S-5XL

5415 Youth S-L

- 9 ounce 60% cotton/40% polyester athletic fleece
- Tear away label
- Jersey lined hood with flat braid drawcord (on Adult only)
- Set-in sleeves
- Front pouch pocket
- Rib-knit cuffs and bottom band



**CORE**  
color choice

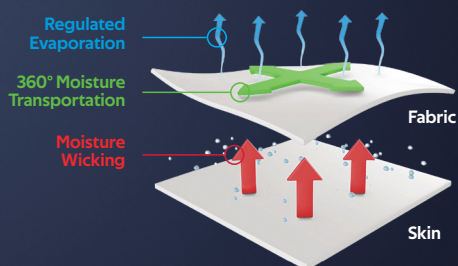




Coolcore® is engineered to distribute moisture quickly throughout the garment.

As the moisture spreads it dries faster to keep you cool and comfortable.

### Patented Fabric Technology



Back

### PERFORATED COOLCORE® VISOR

**P500** Adult One Size

- 96% polyester/4% spandex tech twill
- Mesh sweatband with Coolcore® technology
- 2-inch crown
- Curved visor
- Contrast color undervisor
- Hook-and-loop adjustable
- Perforated side panels with contrast color underlay







Back

## LITE SERIES ALL-SPORT ACTIVE VISOR

**510V** Adult One Size

- 100% polyester lightweight "Ghost" performance fabric
- 2-inch crown
- Curved visor
- Gray undervisor
- Hook-and-loop adjustable


BLACK  
080

BLACK/  
GRAPHITE  
R17

BLACK/  
WHITE  
420

BLACK/  
ROYAL  
426

BLACK/  
ORANGE  
423

BLACK/  
RED  
424

WHITE  
005

WHITE/  
DK GREEN  
232

WHITE/  
MAROON  
224

WHITE/  
GRAPHITE  
751

WHITE/  
BLACK  
226

WHITE/  
NAVY  
221

WHITE/  
RED  
225

WHITE/  
ROYAL  
220


Back



## M2 PERFORMANCE HOOK-AND-LOOP VISOR

**598V** Adult One Size

- M2 Performance
- Stain-resistant
- 2-inch crown
- Curved visor
- Self-material undervisor
- Pro-stitched finish
- Hook-and-loop adjustable


BLACK  
080

NAVY  
065

DK GREEN  
035

ROYAL  
060

RED  
040

WHITE  
005

SILVER  
099

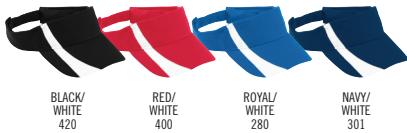




#### ADJUSTABLE WICKING MESH TWO-COLOR VISOR

**6260**      Adult      One Size

- 100% polyester
- Curved visor
- Hook-and-loop adjustable



BLACK/  
WHITE  
420

RED/  
WHITE  
400

ROYAL/  
WHITE  
280

NAVY/  
WHITE  
301



#### ATHLETIC MESH VISOR

**6227**      Adult      One Size

**6228**      Youth      One Size

- 100% polyester athletic mesh with tricot backing
- Curved visor
- Sweatband folds down for easy embellishment
- Hook-and-loop adjustable

Available in Adult & Youth

Available in Adult only



BLACK  
080

WHITE  
005

RED  
040

ROYAL  
060

COLUMBIA  
BLUE  
089

NAVY  
065

SILVER  
GREY  
016

POWER  
PINK  
809

MAROON  
045

GOLD  
025

PURPLE  
050

KELLY  
030

DARK  
GREEN  
035

LIME  
096



### ATHLETIC MESH TWO-COLOR VISOR

**6223** Adult One Size

- 100% polyester athletic mesh with tricot backing
- Curved visor
- Sweatband folds down for easy embellishment
- Hook-and-loop adjustable



BLACK/  
WHITE  
420

RED/  
WHITE  
400

ROYAL/  
WHITE  
280

NAVY/  
WHITE  
301

NAVY/  
RED  
307



### SPORT TWILL VISOR

**6225** Adult One Size

**6226** Youth One Size

- 100% cotton twill
- Curved visor
- Sweatband folds down for easy embellishment
- Hook-and-loop adjustable



Available in Adult & Youth

Available in Adult only

BLACK  
080

WHITE  
005

RED  
040

ROYAL  
060

COLUMBIA  
BLUE  
089

NAVY  
065

ORANGE  
029

MAROON  
045

KELLY  
030

DARK  
GREEN  
035

LIGHT  
PINK  
095

SILVER  
GREY  
016

TEAL  
063

KHAKI  
010



Mini Chevron



Water Color  
Camo



**FREESTYLE SUBLIMATED  
HEADBAND WITH TIE**

**228015** One Size

- Dry-Excel™ 84% polyester/16% spandex single-ply knit
- Adjustable lightweight head tie for a personalized fit
- 4" front, 1.5" back
- Sold in minimum packs of 12 pc per color



Marble



**FREESTYLE SUBLIMATED HEADBAND**

**228016** One Size

- Dry-Excel™ 84% polyester/16% spandex single-ply knit
- 4" front, 1.5" back
- Sold in minimum packs of 12 pc per color

Spike





## ZOOM TIE BACK HEADBAND

**223846** 2" x 34"

- Dry-Excel™ 86% polyester/14% spandex knit
- Adjustable lightweight head tie for a personalized fit



## CHEER HAIR BOW

**6701** One Size

- Solid grosgrain bow
- Decoratable grosgrain ribbon
- 3" x 7.5" with 5.5" tail
- 1" elastic hairband







**NEW**

## DIAMOND GEAR BACKPACK

**R01DWM** 13"W x 21"H x 7"D

- 600-denier polyester with PVC coating
- Matte PVC bottom for durability
- Zippered top pocket lined with brushed interior for valuables/ small devices
- Two front webbing loops for additional clips, securing safety gear
- Full length side bat sleeves (size to fit up to 2 5/8" bat)
- Inside zippered mesh pocket
- Collapsible shelf for glove
- Padded back for support and comfort
- Adjustable padded shoulder straps with adjustable sternum strap



BLACK  
BLK



NAVY  
NAV



ROYAL  
ROY



STEALTH  
SHL



TRUE RED  
TRR



# THE ULTIMATE SOFTBALL GEAR BAG



Web handle at top of backpack with fence clip with hidden pocket to store away when not in use



Top zippered opening with collapsible shelf for glove



Front zippered pocket for batting gloves etc.



Hook and loop strip closure for batting gloves



Large dual entry main interior compartment with two zipper pulls



Two mesh side water bottle pockets

Front helmet flap with adjustable straps





**NEW**

## CORE MULTI-SPORT SOCKS

**6922** Large (10-13)  
Medium (9-11)  
Small (7-9)  
X-Small (5-7)

- 95% polyester/5% rubber
- Knee-length tube sock



## ELITE MULTI-SPORT SOCK

**6006** Large (10-13)  
Medium (9-11)  
Small (7-9)

- 75% acrylic/15% polyester/4% spandex/4% elastic/2% nylon
- Knee length
- Lightweight microfiber yarns offer support while remaining soft to the touch



## WICKING ATHLETIC SOCK

**6085** Large (10-13)  
Medium (9-11)  
Small (7-9)

- 70% lucool wicking polyester/13% nylon/12% elastic/5% spandex
- Knee-length tube sock

## GAME SOCK

**6020** Large (10-13)  
Medium (9-11)  
Small (7-9)

- 91% nylon/5% polyester/4% elastic
- Tube sock, slightly below the knee



BLACK  
080



VEGAS GOLD 023  
BLACK 080  
WHITE 005  
RED 040  
ROYAL 060  
COLUMBIA BLUE 089



BLACK 080  
WHITE 005  
RED 040  
ROYAL 060  
NAVY 065



BLACK 080  
RED 040  
ROYAL 060  
NAVY 065  
ORANGE 029



NAVY 065  
ORANGE 029  
GOLD 025  
PURPLE 747  
DARK GREEN 035  
LIME 096



MAROON 045  
GOLD 025  
PURPLE 050  
KELLY 030  
DARK GREEN 035



MAROON 045  
GOLD 025  
PURPLE 050  
KELLY 030  
DARK GREEN 035



POWER YELLOW 810  
GRAPHITE 059  
KELLY 030  
MAROON 045  
CARDINAL 136  
POWER PINK 809



TEAL 063  
WHITE 005



Screen  
Print



3D  
Embroidery



Applique



Embroidery



Tonal  
Etch

flexstyle



Heat  
Transfer



Sublimated  
Patch

Flat  
Embroidery

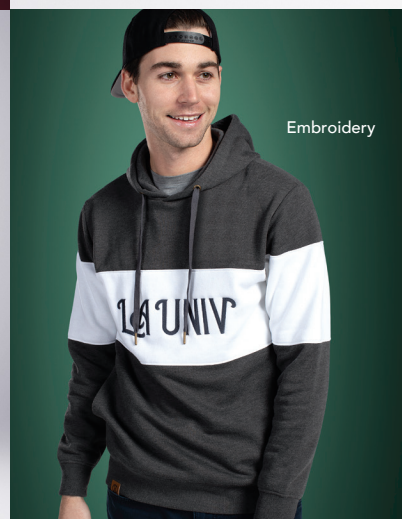


Heat  
Transfer

Genuine  
Leather  
Patch



Embroidery



## WE HAVE THE TECHNIQUES FOR YOUR CUSTOMIZATION & DECORATION

For our full list of decoration techniques, pricing & access to our complete library of stock templates for both apparel & headwear, visit [augustasportswear.ca/decoration](http://augustasportswear.ca/decoration)

Screen  
Print



Faux  
Leather  
Patch





ASB



[www.augustasportswear.ca](http://www.augustasportswear.ca)